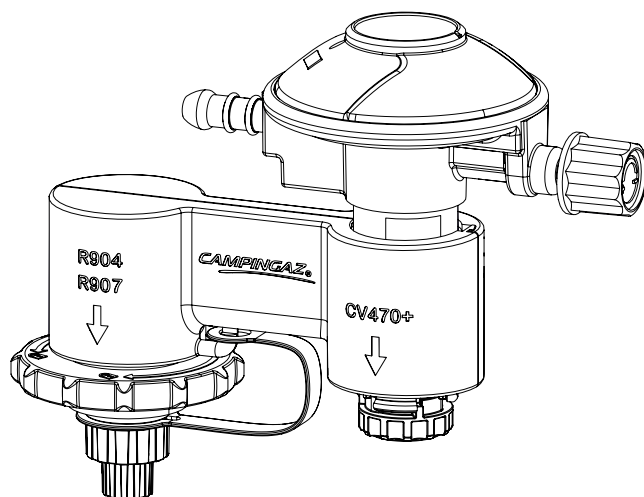


CAMPINGAZ®

GB INSTRUCTIONS FOR USE



Thank you for choosing a Campingaz® product.

This product is designed for a normal private use, not intended for commercial purposes.

WARNING:

- The purpose of these instructions is to enable you to use your Campingaz® Twin connection correctly and safely.
- Please read them carefully to familiarise yourself with the appliance prior to assembling the gas cartridge or the cylinder.
- Please observe these instructions and the safety measures printed on the Campingaz® CV 470 PLUS cartridges and on the Campingaz® cylinder R904 or R907. Failure to observe these instructions may result in the user and people in the immediate vicinity being put at risk.
- Keep these instructions in a safe place so that you can refer to them if needed.
- The connection provided in this pack must be used exclusively with Campingaz® CV 470 PLUS cartridges and with Campingaz® R904 or R907. Using other gas cartridges or cylinders may be dangerous.
- The company Application Des Gaz accepts no responsibility where cartridges of any other brand are used.
- Read these Operating instructions carefully before connecting the Twin connection to a cylinder or a cartridge, and to your appliance. Always keep these Operating instructions in a safe place so that you can refer to if need be.
- Read carefully as well the Instructions for Use of your appliance before to use it with this kit.
- Keep out of reach of children.
- The gas cylinder and cartridge must always be used in vertical position.
- Never use the kit without the clamps being correctly secured.
- Never assemble the Twin connection on a gas cylinder or a cartridge if it is not connected to an appliance.
- Normal lifetime of the connection is 10 years, replace it after 10 years of use from the date of manufacturing marked on it.
- Connect the cylinder or the cartridge outdoors, and away from inflammable materials.
- Before assembly of the Twin connection to the cylinder, always check that the seal is not damaged and assembled correctly at the inlet of the connection. Check that the cylinder and especially the valve is not damaged. If you smell gas, contact your after sales representative.
- Before assembly of the Twin connection to the cartridge, always check that the Easy Click connection is not damaged. Check that the cartridge and especially the valve is not damaged. If you smell gas, contact your after sales representative.
- Protect the connection from rain and water. Avoid that the hole on the cover of the regulator is obstructed.
- Do not move the cylinder or the cartridge in operation, do not smoke.
- In case of damage on the Twin connection, the hose, the cylinder or the cartridge or the appliance they are connected to, shut off the gas and contact your aftersales office immediately.
- In case of fire on the appliance, close immediately the control knob of the regulator to stop the gas if safe to do so. Use a wet cloth if necessary.
- Store this kit in a clean and dry location protected from weather, atmospheric agents and direct sunlight.
- Do not use appliance which leaks, is damaged or functions incorrectly. Instead, return it to your retailer who will inform you of your nearest aftersales service.
- Never look for a gas leak with a flame, use a solution of water and soap or gas leak liquid.
- Never modify this kit or use it for purposes for which it is not intended. Any modification of the kit could be dangerous.
- Do not use this kit in caravans, cars, tents, huts, sheds or any small enclosed areas.
- The kit should not be used while sleeping or left unattended.
- Don't connect a CV 470 PLUS to an appliance whose power is higher than 2500 W (single burner) or 2 times 2000 W (double burner). The cartridge may freeze and not deliver the pressure needed for the product to work properly. Prefer to connect a cylinder. Check compatible models on campingaz.co.uk or scan the QR code on the box.
- Never use the regulator as a handle to move the cylinder R904/907 or the cartridge.

INSTRUCTIONS FOR USE

A. REGULATOR

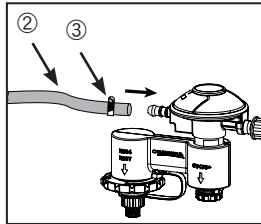
TYPE 794 CAMPING SINGLE STAGE, FIXED LOW PRESSURE REGULATOR COMPLIANT WITH STANDARD EN 16129

- Input pressure (p): 0,3-7,5 bar (Butane)
- Regulated pressure (pd): 29 mbar
- Guaranteed output (Mg): 0.8 kg/h
- Inlet connection: type G.3 of EN 16129
- Outlet connection: type H.50 of EN 16129
- Type of gas: Butane
- **Note:** The marking ΔP_2 on the label is the admissible maximum value of downstream pressure loss and shall not be exceeded.

B. FITTING THE RUBBER HOSE TO THE REGULATOR

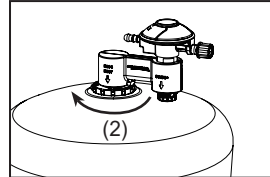
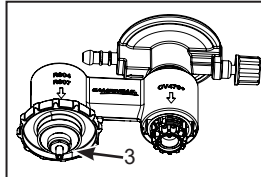
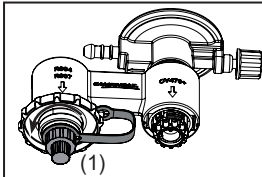
Connect the end of the hose ② to the regulator outlet, if necessary with the aid of soapy water. Fasten the hose using the clamp ③.

Warning : never use the kit without the clamp ③ being correctly secured.



C. ASSEMBLY OF THE TWIN CONNECTION TO THE GAS CYLINDER

Always operate in an opened, well ventilated area, never in the presence of a flame, spark or any other source of heat (cigarette, electrical appliance, etc) and away from other persons or flammable materials. Remove the plug and carry handle from the self-closing valve of the cylinder R904/907. Unscrew the protective plastic cap of the connection by turning in the counter-clockwise direction (1). Check the presence and the good condition of the gasket 3. Tighten the connection by screwing up the black ring in the direction indicated by the arrow (clockwise direction of rotation) (2). You should tighten moderately, nevertheless sufficiently to ensure a leak-tight joint which will be checked by using a soapy-water solution.



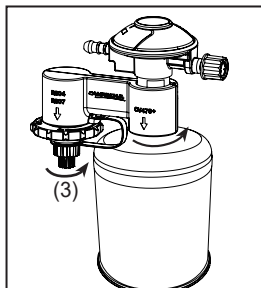
D. ASSEMBLY OF THE TWIN CONNECTION TO THE CV 470 PLUS

Always operate in an opened, well ventilated area, never in the presence of a flame, spark or any other source of heat (cigarette, electrical appliance, etc) and away from other persons or flammable materials.

Gently screw in the gas cartridge by turning it clockwise until you hear a click (approximately one-sixth of a turn).

Do not force the cartridge to turn further than this; you will risk damaging the cartridge valve.

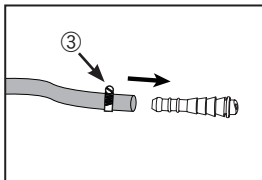
Protect the cylinder connection by screwing the protective plastic cap back on (3).



E. FITTING THE RUBBER HOSE TO THE APPLIANCE

Connect the 2nd end of the hose to the inlet connector of the appliance, if necessary with the aid of soapy water. Fasten the hose using the clamp.

Warning : never use the kit without the clamp ③ being correctly secured.

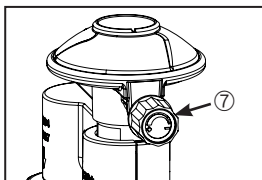


Check that the flexible hose stretches out normally without twisting or pulling and does not come in contact with the hot sides of the appliance. It should be replaced when it is damaged or develops surface cracks. Do not pull or pierce the hose.

Keep away from any parts of the appliance that get hot.

F. ON/OFF CONTROL KNOB OF REGULATOR

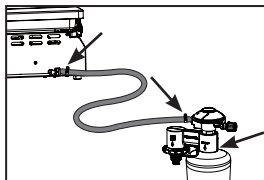
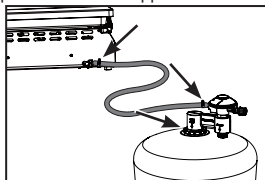
Once the Twin connection has been correctly mounted on the self-closing valve of the cylinder or the CV470 PLUS, the gas supply takes place by turning the control knob ⑦ counterclockwise. To shut off the gas supply, reverse above procedure. The symbol engraved on the knob indicates its opening and closing direction.



G. GAS LEAK CHECK

All gas leaks, however small, are dangerous and must be eliminated. Escaping gas can normally be traced by smell or sound but liquid detergent should be brushed over the area to confirm the location of the leak. NEVER look for a leak with a naked flame.

- Apply liquid leak detector to the cylinder, cylinder valve, regulator outlet, hose and appliance inlet connector.
- The control knobs of the appliance must remain at closed setting (●).
- Open the gas supply (turn knob of regulator in counterclockwise direction).
- Any gas leak will be indicated by bubbles.
- If leak is suspected, turn off gas supply immediately and extinguish any standing pilot flames or naked flames.
- The appliance cannot be used until all leaks have been eliminated.
- Contact your Aftersales representative for support.



H. GAS CYLINDER REPLACEMENT

- Check that the tap of the regulator is closed: turn its control knob ⑦ in clockwise direction.
- Check that all the valves of the appliance are closed: turn them in clockwise direction.
- Disconnect the Twin connection from the gas cylinder turning the black ring in opposite direction of the arrow.
- Assemble the connection to the new gas cylinder (check the state of the seal before connecting it) or to a CV470 PLUS.

I. CV 470 PLUS REPLACEMENT

- Check that the tap of the regulator is closed: turn its control knob ⑦ in clockwise direction.
- Check that all the valves of the appliance are closed: turn them in clockwise direction.
- Disconnect the Twin connection from the CV470 PLUS
- Assemble the Twin connection to the new CV470 PLUS or to a gas cylinder (check the state of the seal of the regulator before connecting it).